

All gear pumps of the F, D, FLM, FKM, FOM, FAM series are alternatively available with integrated pressure relief valve (DB).
Add *U* to the type designation for pump versions with recirculation valve in the pump cover (FU, DU, FLMU, FKMU, FAMU, FOMU).

Gear pumps with spring-loaded ball valve in the pump cover, the pressure relief valve with internal recirculation may only be used for short-term pressure limitations.

If a valve is required for discontinuous & continuous operation, a valve with return line to the vessel should be used e.g. our series DB
DB series pressure relief valves can be found here:

--> <https://www.linn-pumpen.de/com/gear-pumps/DB-pressure-stop-valves.html> <--



Control ranges

F..U/DU1-3 (max. 20 bar) Gear pumps size 1 to 3

Pressure ranges and possible presetting of opening pressure

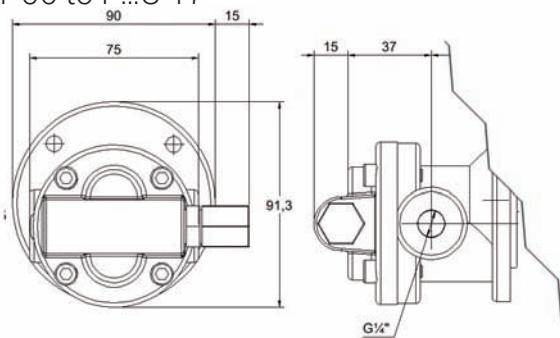
- (I) 2 - 10 bar
- (II) 5 - 15 bar
- (III) 10 - 20 bar

F..U/DU4-5 (max. 10 bar) Gear pumps size 4 to 5

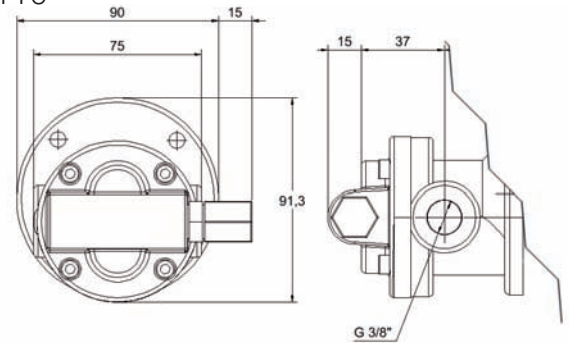
Pressure ranges and possible presetting of opening pressure

- (I) 2 - 6 bar
- (II) 5 - 10 bar

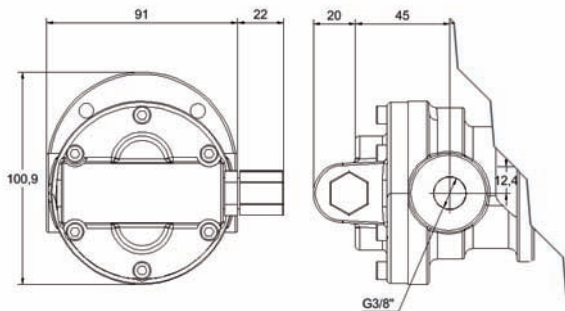
F...U 1-06 to F...U 17



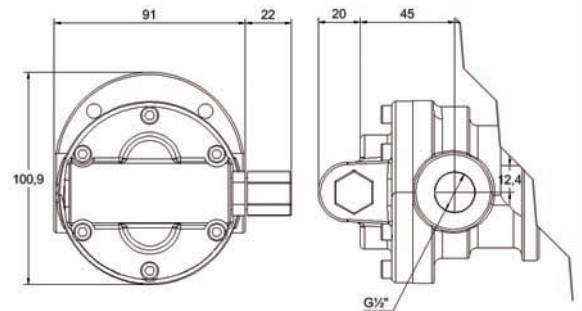
F...U 110



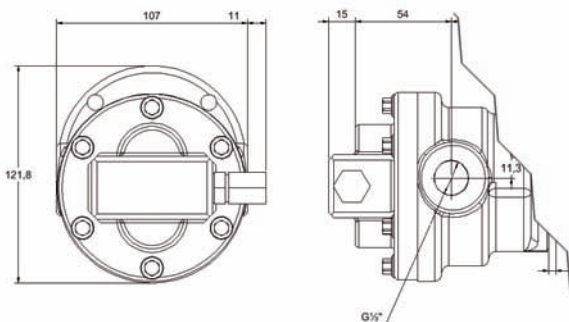
F...U 210 to F...U 214



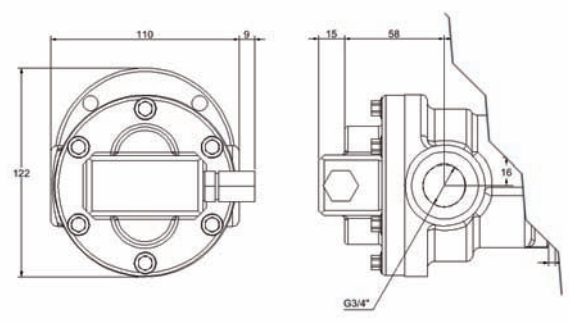
F...U 219



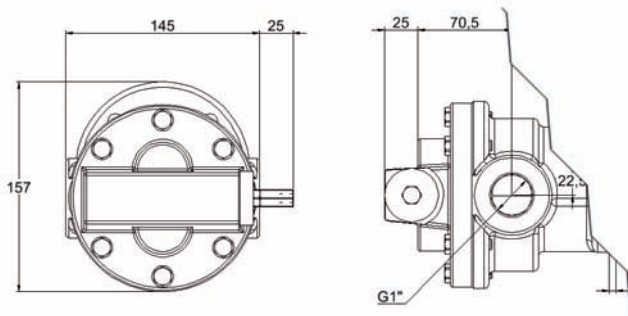
F...U 310 to F...U 323



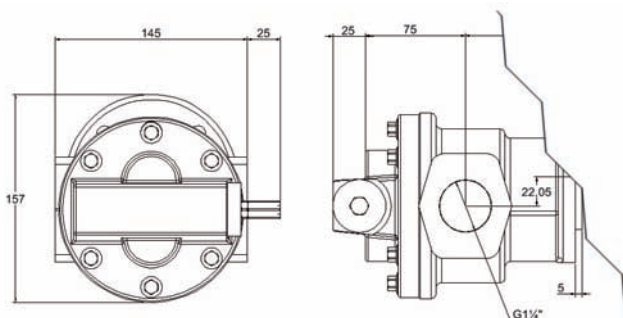
F...U 328 to F...U 333



F...U 422 to F...U 438



F...U 545 to F...U 556



F...U 570 to F...U 590

